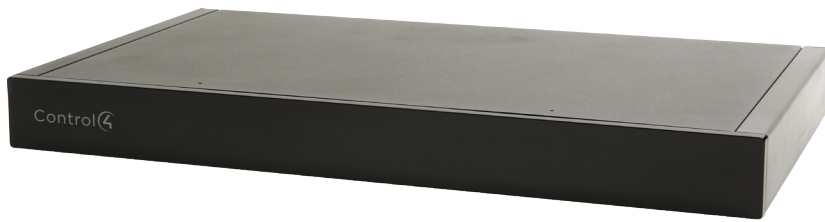


Control4® IO Extender V2



Control4® IO Extender V2 C4-IOXV2

The Control4® IO Extender V2 is the simple way to expand a Control4 system to control more of the devices around your home including audio/video equipment, garage doors, motion sensors, and other devices that use infrared (IR), serial, contact, and relay connections. The IO Extender V2 has a sleek, new industrial design that makes it a great companion to the EA Series of entertainment and automation controllers.

The IO Extender V2 features the ability to be powered by PoE+, providing power and network connectivity over a single CAT5e/CAT6 network cable and allowing for greater installation flexibility. In addition, the IO Extender V2 provides flexible options for mounting in an equipment rack (1U) or on a shelf. The included rack ears may be installed on the front or back of the IO Extender V2, allowing you to mount the IO Extender at the front or the back of the equipment rack.

- Easily add more control capability to new or existing systems
- Packed with I/O: 8 IR outputs, 4 serial outputs, 8 contacts, and 8 relays
- Flexible rack or shelf installation—rack ears included
- Flexible power options—internal universal power supply or PoE+
- Utilizes the same driver as the original IO Extender, maintaining ease of deployment



Control4®



DTI COLOMBIA SAS
Expertos en Tecnología y Hogar
Tel: 313 8866782
www.dticolombia.com
servicioclientes@dticolombia.com

@DTIColombiaSAS

@dti_colombia

ESPECIFICACIONES

Control4® IO Extender V2

Model number	C4-IOXV2
Network	
Ethernet	10/100BaseT compatible
Inputs/Outputs	
IR OUT	8 IR out—5V 27mA max output
SERIAL OUT	4 DB9 ports
Contact	8 contact sensors—30VDC maximum input 12VDC 1.25A maximum output
Relay	8 relays—AC: 36V, 2A DC: 24V, 2A maximum
Power	
Power requirements	100-240VAC, 60/50 Hz or PoE+—up to 25.5W, IEEE 802.3at-2009
Power consumption	Max: 30W, 102 BTUs/hour Idle: 10W, 34 BTUs/hour
Other	
Operating temperature	32°F - 104°F (0°C - 40°C)
Storage temperature	4°F - 158°F (-20°C - 70°C)
Dimensions (H x W x D)	17.5" (444 mm) x 10.125" (258 mm) x 1.875" (49 mm) w/feet
Mounting	1U rack mount with included rack ears
Weight	6.55 lbs (2.97 kg)
Shipping weight	9.60 lbs (4.35 kg)
Accessories	
Control4 Gigabit PoE+ Injector	AC-POE2-B
Pakedge Managed Gigabit Switch with 8 Rear Facing PoE+/PoE Ports	SX-8P
Pakedge 24 Port Managed Switch with 24 PoE or 12 PoE+ Ports	SX-24P



DTI COLOMBIA SAS
Expertos en Tecnología y Hogar
Tel: 313 8866782
www.dticolombia.com
servicioclientes@dticolombia.com

@DTIColombiaSAS

@dti_colombia